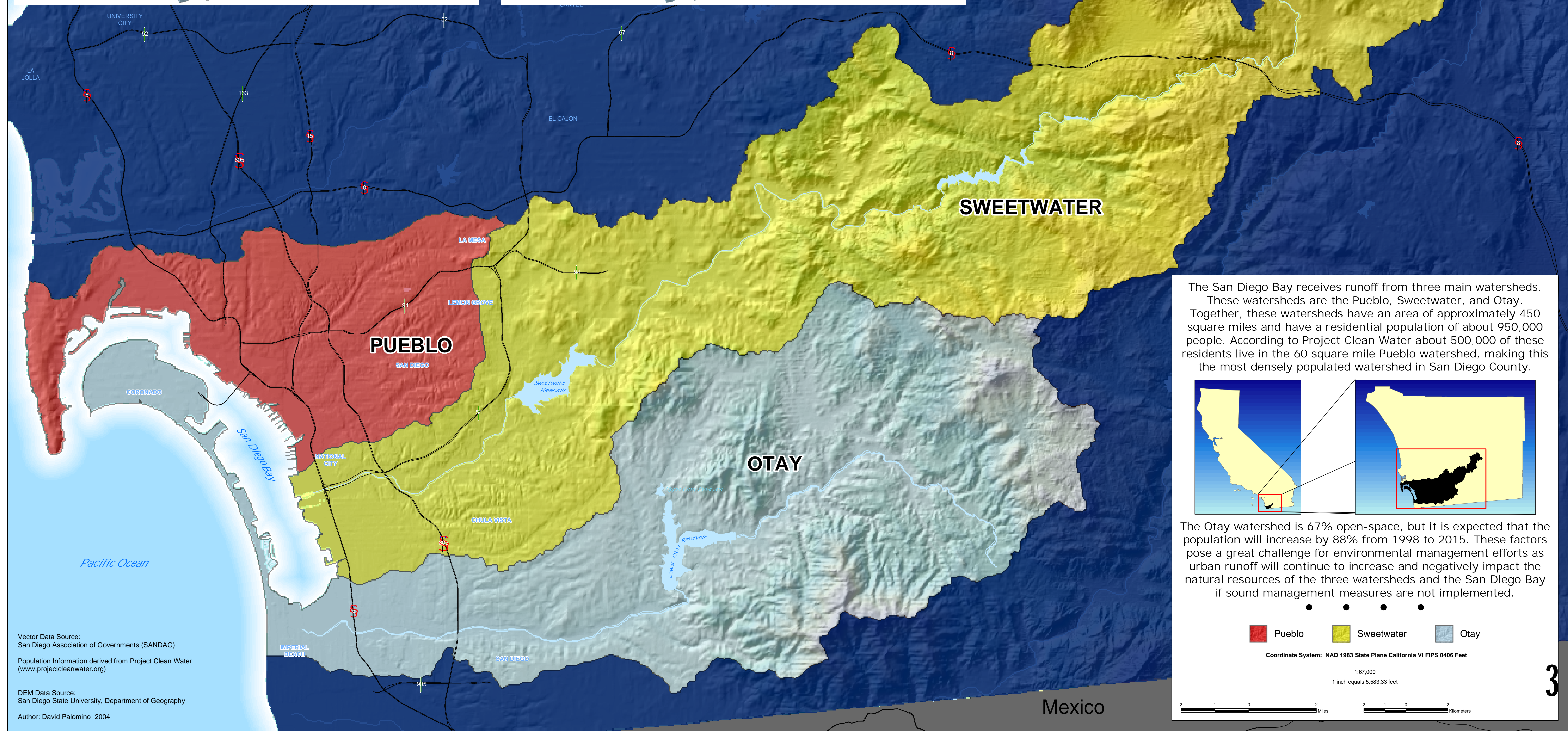
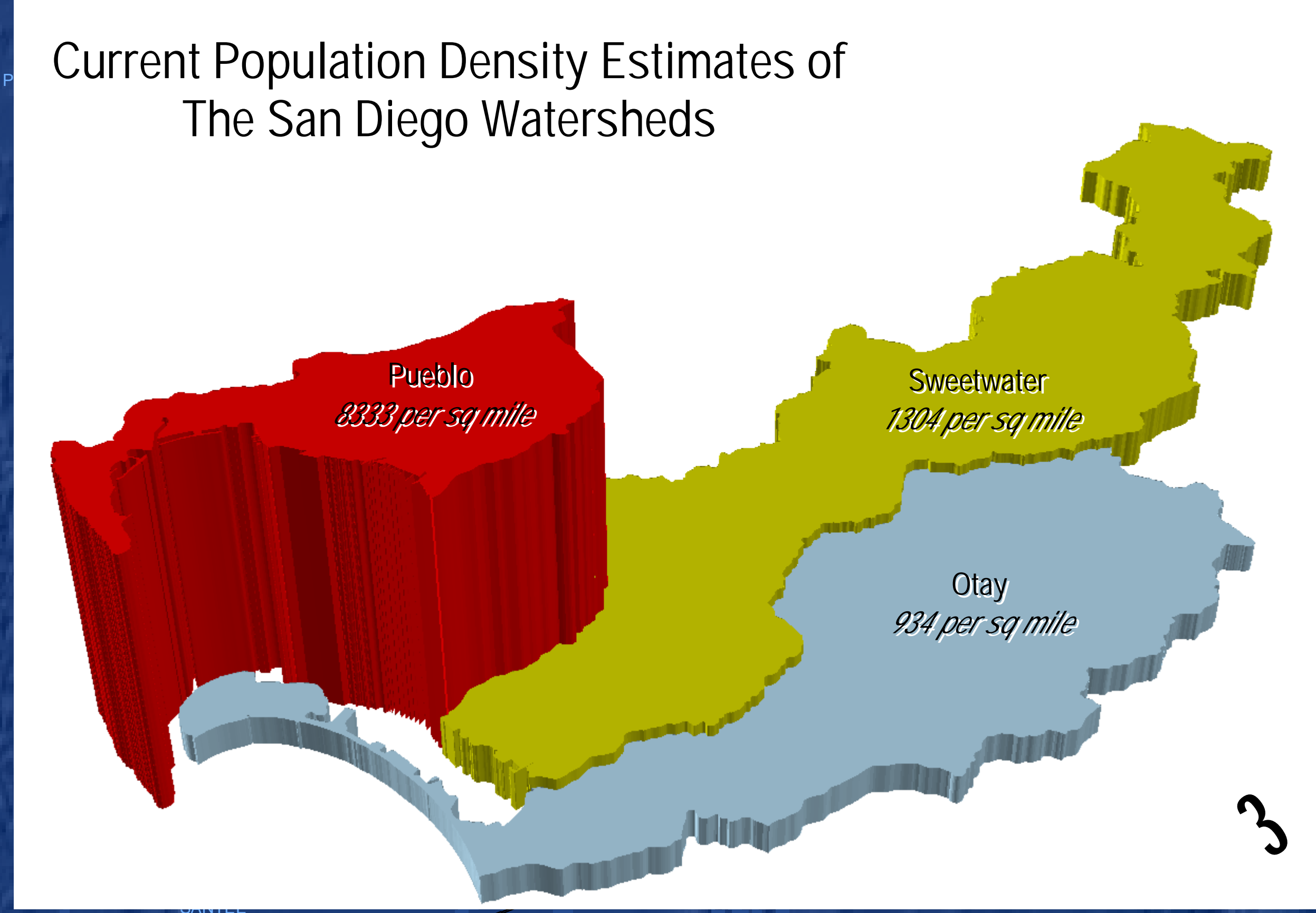
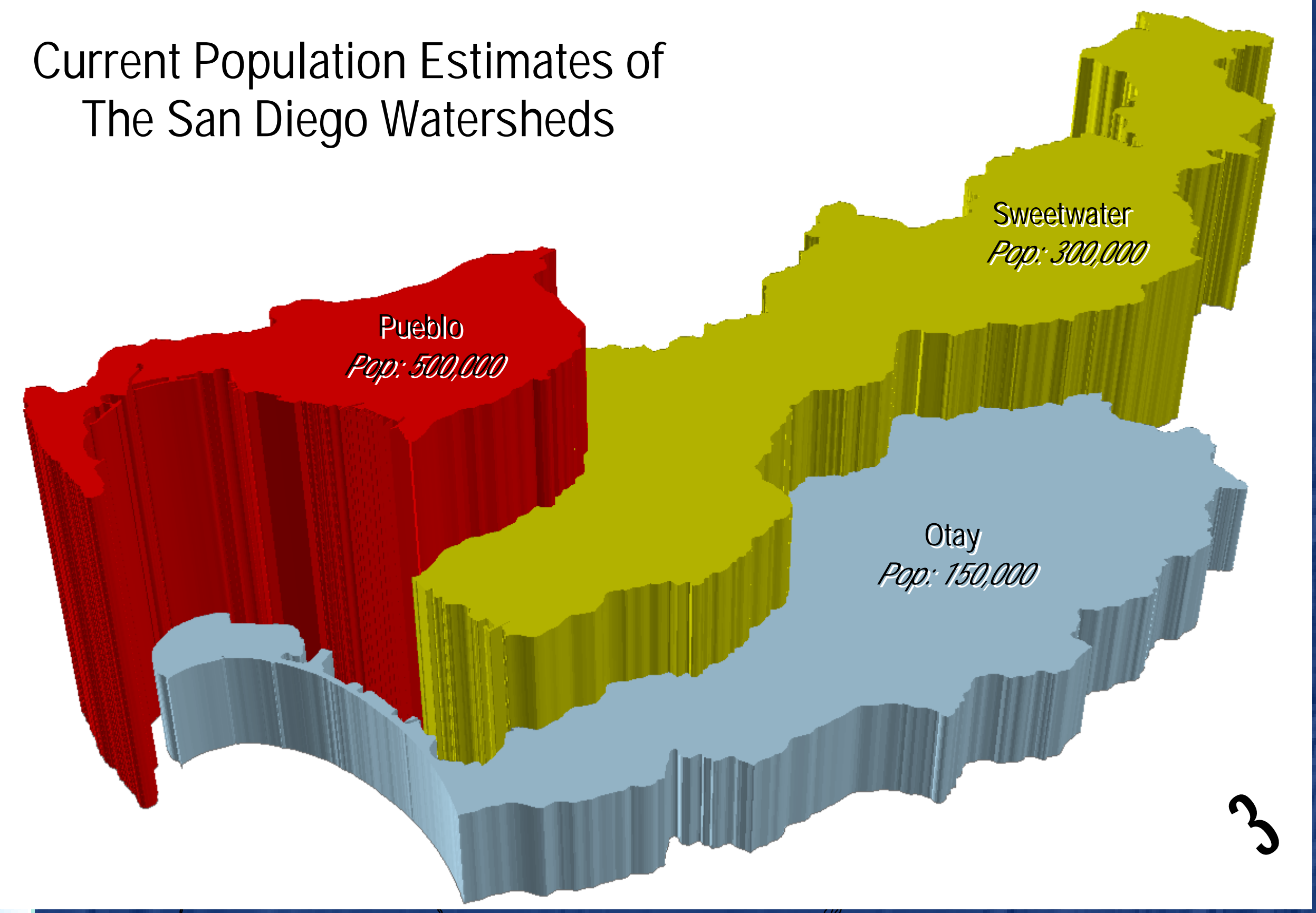
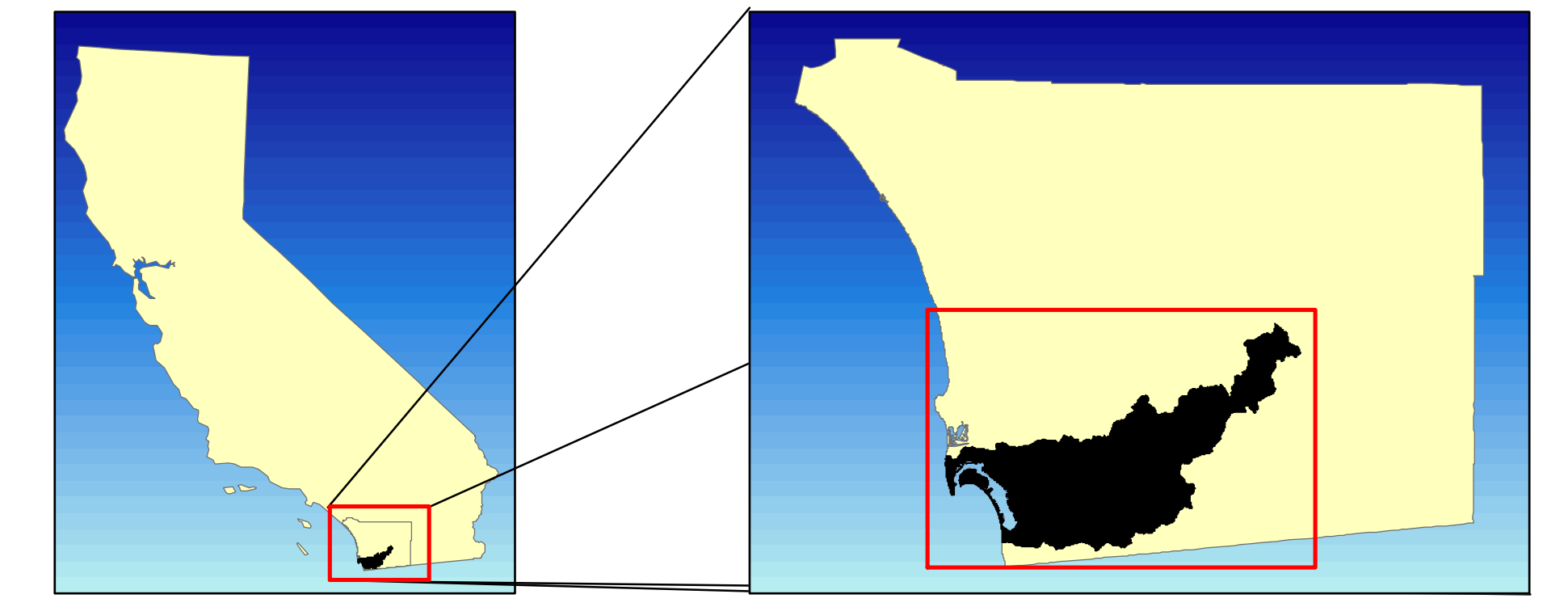


# The San Diego Bay Watersheds with Population Figures



The San Diego Bay receives runoff from three main watersheds. These watersheds are the Pueblo, Sweetwater, and Otay. Together, these watersheds have an area of approximately 450 square miles and have a residential population of about 950,000 people. According to Project Clean Water about 500,000 of these residents live in the 60 square mile Pueblo watershed, making this the most densely populated watershed in San Diego County.

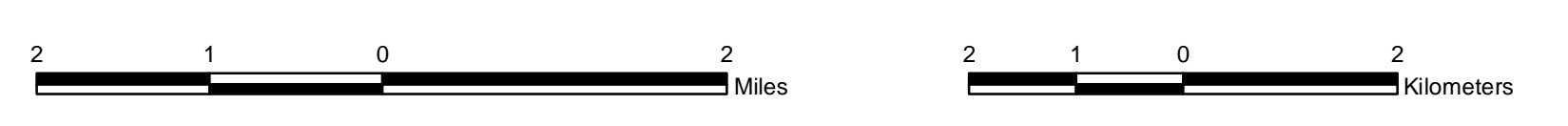


The Otay watershed is 67% open-space, but it is expected that the population will increase by 88% from 1998 to 2015. These factors pose a great challenge for environmental management efforts as urban runoff will continue to increase and negatively impact the natural resources of the three watersheds and the San Diego Bay if sound management measures are not implemented.

■ Pueblo   
 ■ Sweetwater   
 ■ Otay

Coordinate System: NAD 1983 State Plane California VI FIPS 0406 Feet

1:67,000  
1 inch equals 5,583.33 feet



Vector Data Source:  
San Diego Association of Governments (SANDAG)  
Population Information derived from Project Clean Water  
(www.projectcleanwater.org)  
DEM Data Source:  
San Diego State University, Department of Geography  
Author: David Palomino 2004